



USER MANUAL  
ANLEITUNG  
GEBRUIKERSHANDLEIDING  
MANUAL DEL USUARIO  
MANUEL D'UTILISATION

  
**ROLDECK**  
POOL COVER SYSTEMS

EN

## User manual

4

DE

## Anleitung

38

NL

## Gebruikershandleiding

72

ES

## Manual del usuario

106

FR

## Manuel d'utilisation

140



# User manual

Roldeck®  
All rights reserved.

The information issued may not be multiplied and/or disclosed in any way, by whatever means (electronically or mechanically), without explicit, prior written permission from Roldeck®. The information provided is based on the data that were known the moment of the product's issuance. Roldeck® pursues a policy of continuous product improvement, therefore, changes are reserved.

The information provided applies for the product as it was produced by Roldeck®. Therefore, Roldeck® cannot be held liable for possible damages resulting from deviations from the original product specifications. The available information was compiled with all possible care, however, Roldeck® cannot be held liable for possible errors in the information or for their consequences. Roldeck® cannot be held liable for damages resulting from activities that were performed by third parties.

The usage names, trade names, trade marks etc., used by Roldeck® cannot be considered free in virtue of legislation concerning the protection of trade marks.

## Table of Contents

<b>1</b>	<b>General</b>	<b>6</b>
1.1	Purpose of this manual	6
1.2	Icons used in this manual	6
1.3	Disposal and Environment	6
1.4	Service and Maintenance	6
1.5	Warranty Conditions	6
<b>2</b>	<b>Overview</b>	<b>7</b>
<b>3</b>	<b>Safety</b>	<b>8</b>
3.1	Emergency Shutdown	8
3.2	Operation	8
3.3	Security lock	8
3.4	Roldeck®	9
3.5	Descaling	9
3.6	Preparing for Winter	9
<b>4</b>	<b>Operation</b>	<b>10</b>
4.1	Overview Control	10
4.2	Removal of the RDEB2013 front panel	10
4.3	Overview RDEB2013 control	11
4.4	sSwitch Control panel	12
4.5	Operating the Key Switch	14
4.6	Remote Control	14
<b>5</b>	<b>Programming with sSwitch</b>	<b>15</b>
5.1	Control	15
5.2	Change the position (afterwards) with the sSwitch	18
5.3	Child lock	20
5.4	Releasing Keylock sSwitch	22
5.5	AutoLock function	23
5.6	Lamps, that can be activate by the sSwitch	24
<b>6</b>	<b>Cleaning and maintenance</b>	<b>25</b>
6.1	Slats	25
6.2	Debris	25
6.3	Housing	25
6.4	Descaling	26
6.5	Cleaning	27
6.6	Crystal Clear	27
6.7	Chlorine shock	28
<b>7</b>	<b>Slats</b>	<b>29</b>
7.1	Disassemble the slats	29
7.2	Assembling slats	30
7.3	Clips and Brackets	31
7.4	Overflow guide	32
<b>8</b>	<b>Failures</b>	<b>33</b>
8.1	Overview failure Messages RDEB2013	33
8.2	Failure Prevention	34
8.3	Water Level Control	35
8.4	Manual Roldeck® Operation	36
<b>9</b>	<b>Technical Specifications</b>	<b>37</b>
<b>10</b>	<b>Supplement</b>	<b>174</b>

# 1 General

## 1.1 Purpose of this manual


This manual describes the Roldeck®'s daily use.

Read the manual carefully. Every user must be acquainted with the contents of this manual. Follow the instructions in the manual with extreme care. Always perform the operations in the correct order.

Keep the manual in a fixed spot near the operation cabinet. If the manual gets lost, order a new copy through your supplier.

## 1.2 Icons used in this manual

A symbol is used in this manual:


 Caution! Procedures that demand additional attention.

## 1.3 Disposal and Environment

If the Roldeck® is discarded, It must be disposed in accordance with your local recycling centre regulations. Please contact your local recycling centre for further assistance.

## 1.4 Service and Maintenance

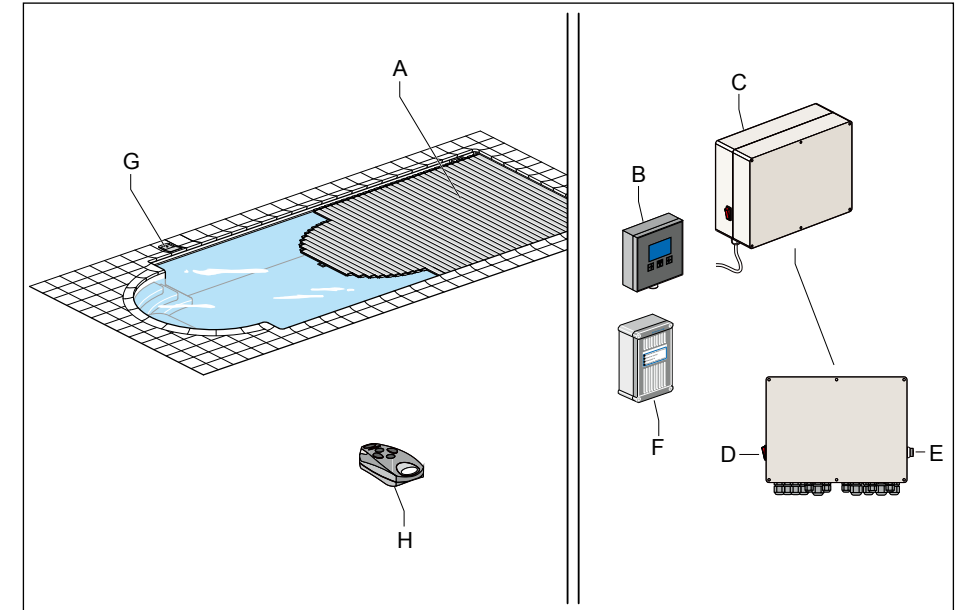
- Have the Roldeck® installation checked by the installer at least once a year.
- Report Roldeck® failures always to your installer.
- Placing PVC slats in direct sunlight can cause them to warp and the plastic can become soft. This may result in a malfunction of the Roldeck®.

 The filter installation must be in operation while the Roldeck is closed. The flow in the water will distribute and cool the water just under the slats. This prevents the slats from heating up and warping or burning.

## 1.5 Warranty Conditions

Warranty conditions can be checked online at [www.roldeck.com/en/conditions](http://www.roldeck.com/en/conditions)

# 2 Overview

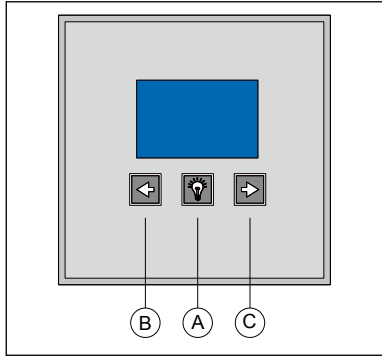


- A Roldeck®
- B sSwitch
- C Control
- D On /off switch
- E Key switch
- F Optional Level Control
- G Optional Level Measurement Point
- H Remote Control

## 3 Safety

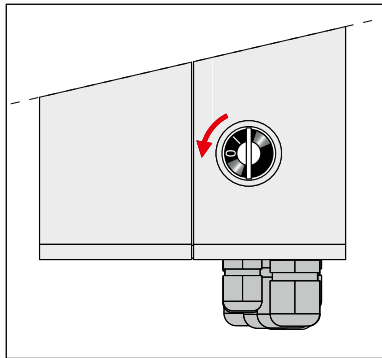
### 3.1 Emergency Shutdown

If the key switch on the control box is in the 0 position, it will function as emergency shutdown and the Roldeck® cannot be controlled by unauthorized persons. Pressing one of the buttons A, B or C of the sSwitch will work as emergency shutdown as well if the motor is running.



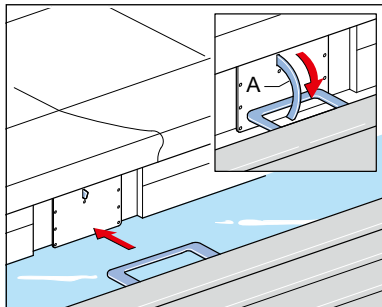
### 3.2 Operation

- ⚠ To operate the Roldeck® the key switch must be in position 1.
- ⚠ If the key switch is in position 0, the Roldeck cannot be operated (child safety).
- ⚠ Make sure that there aren't any persons or objects in the pool when closing the Roldeck®.



### 3.3 Security lock

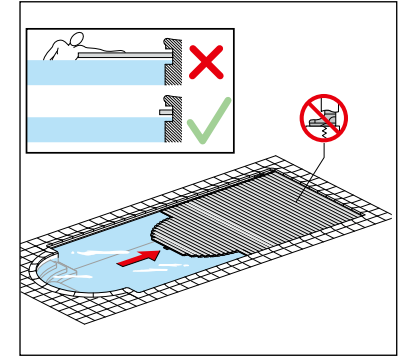
The security lock (A) is an automatic safety lock that prevents children from being able to push the cover forwards or backwards whilst on the pool. Check operation every time you close the cover. The water level is very important for it to function correctly, if too high or too low the latch hook won't engage correctly with the safety lock. This lock is optional.



### 3.4 Roldeck®

Always make sure that the Roldeck® has been fully opened when the pool is being used. Use of the pool while the Roldeck® has been closed partially or completely may result in injury and/or Roldeck® damage.

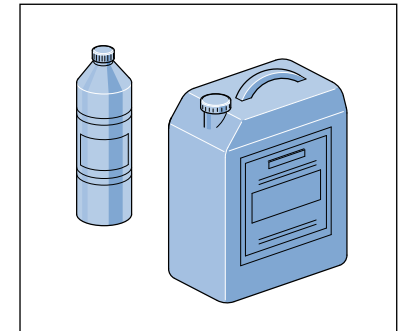
- ⚠ Don't stand/walk on the Roldeck®.



### 3.5 Maintenance

For the use of maintenance products, refer to the instructions on the packaging.

See chapter 6 page 25 how to clean & maintain your cover.



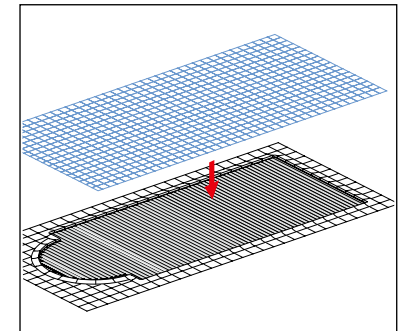
### 3.6 Preparing for Winter

The benefits of the Roldeck® will be lost if a winter cover is used and the Roldeck® left in the open position. The slats may remain on the pool in the winter time and apply a winter debris cover over the top accordingly. It is true that the Roldeck® may become dirtier if a winter cover is used with the Roldeck® in the closed position but the pool will be safer.

Use a winter cover when the Roldeck remains open.

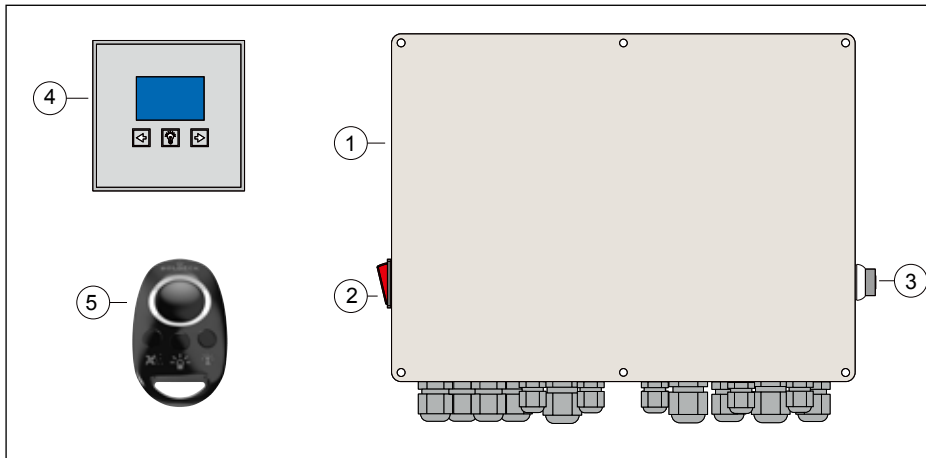
#### External motor pit

If the cover's motor has been installed in an external motor pit, then regular checks need to be made that there is no water present in the pit. In the winter, disassemble the cover's drive motor and put it in a dry place.

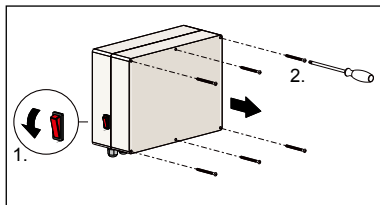


## 4 Operation

### 4.1 Overview Control



- 1 Control RDEB2013
- 2 On/Off switch
- 3 Key Switch
- 4 sSwitch
- 5 Remote control



### 4.2 Removal of the RDEB2013 front panel

#### Removal of the RDEB2013 panel

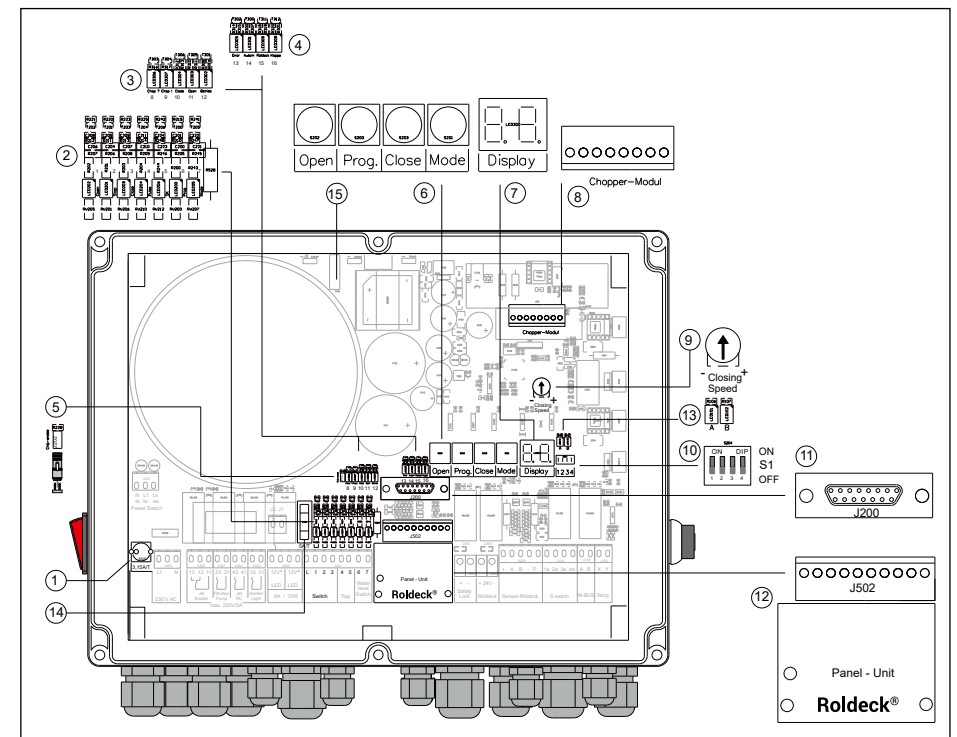
- Before the housing is opened the equipment must be switched off.
- Remove the 6 screws from the front panel of the housing. Remove the panel of the control housing.

#### Re-fitting the panel

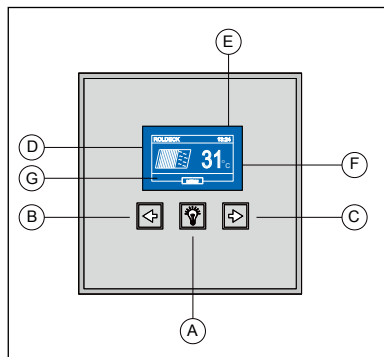
Put the panel back on the housing and tighten the screws crosswise.

- Make sure that the panel on the housing is completely closed, otherwise condensation may occur inside the housing, which may damage the RDEB2013.

### 4.3 Overview RDEB2013 control



- 1 Fuse primary 230V / 3.15 A T
- 2 LED 01 t/m 07
- 3 LED 08 t/m 12
- 4 LED 13 t/m 16
- 5 Jumper connector (for installation)
- 6 Program buttons
- 7 Display
- 8 Chopper module
- 9 Adjust 'close' speed
- 10 DIP Switch S1
- 11 Socket for program plug
- 12 Automatic lid module
- 13 LED A & B Motor sensor signal
- 14 Fuse 12V LED
- 15 Pull-out Fuse 15A

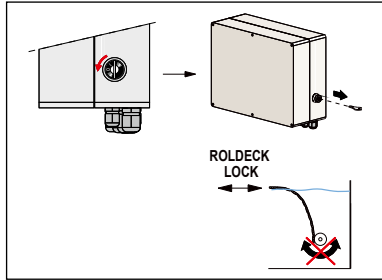


#### 4.4 sSwitch control panel

With the arrow keys ◀ of ▶ the Roldeck® can be 'opened' or 'closed'.  
By touching one of the three keys when opening or closing the Roldeck®, the Roldeck® stops.

	Function	Description
	A 'Mode' – key	By pressing the mode key for 3 seconds, this will direct you into a set-up menu. <ul style="list-style-type: none"> <li>Information of the controlbox</li> <li>Calibrate temperature</li> <li>Programming extra remote controls</li> <li>Setup time and date</li> </ul>
		By pressing the mode key for a 1 second, this will turn the pool lights on and off. When on and pressing the key twice will switch between the color by LED RGB.
		Auto Lock function: After 15 minutes 'locked' unlock the sSwitch by pressing the menu key a few seconds.
	B Key 'Open' / 'Close'	By Pressing the key, the Roldeck® will operate.
	C Key 'Open' / 'Close'	By Pressing the key, the Roldeck® will operate.
	D Control – 'Open' / 'Close'	Status reading the Roldeck® and other functions.
	E Time	Time indication
	F Temperature	Water temperature reading (optional)
	G Indicator symbols	

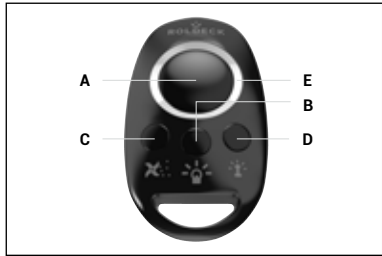
Symbol	Description
	Correction/fine tuning
	Choosing the running direction of the Roldeck®.
	Exit menu
	Save position
	Delete program
	Sign on the remote control (max. 8 pieces)
	The amount of remote controls that are logged in. 1/8 2/8 3/8 4/8 5/8 6/8 7/8 8/8
	Open the swimming pool
	Pool lights ON
	Pool lights ON/fun pump ON/garden lights ON
	Key lock is active
	Programming jumper/plug present. Remove jumper / plug after programming
	'Child lock' on: see chapter 5.4 pg 22.
	Key switch is in position '0'
	Set the time
	Setting minutes
	Setting hours
	Choosing lamp (white LED)
	Choosing lamp (RGB LED)



#### 4.5 Operating the key switch

**⚠** To operate the Roldeck® the key switch must be in position 1.

If the key switch is in position 0 it works as emergency stop and the Roldeck® is not operable (childproof safety).



#### 4.6 Remote Control

A Roldeck® open / stop / close.  
 B Pool light  
 C Jetstream  
 D Garden Light  
 E LED: will indicate that the remote control is functioning.

- ⚠** Make sure you can see the swimming pool when operating the cover;
- ⚠** A delay was built into the closing function.
- ⚠** You need to keep the button pressed for 2 seconds before it responds.

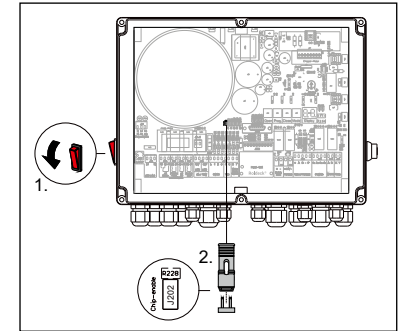
## 5 Programming with sSwitch

### 5.1 Control

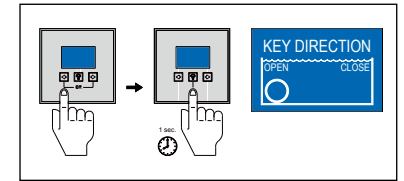
Programming of the control occurs with the help of the sSwitch control panel.

First turn on the control by means of the red button (1) and connect the jumper of the RD2013 into socket (2).

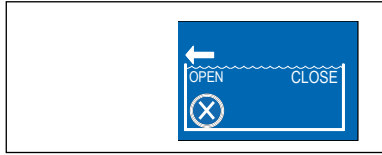
- ⚠** Leave the jumper in it during use.
- ⚠** Programming the Roldeck® with automatic lid is not possible on the sSwitch!



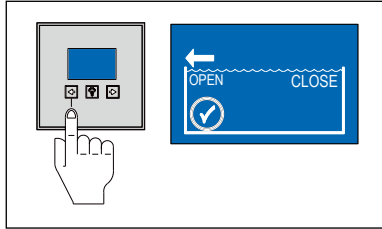
During first programming use the arrow keys ← or → to change the running direction. Press the middle key 'light symbol' shortly to save the running direction.



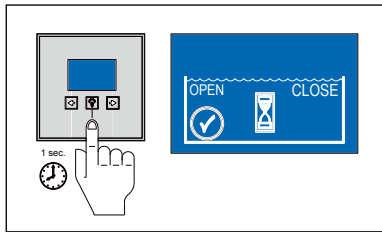




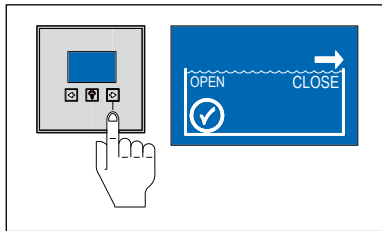
The display shows the following picture. Now there can be started with programming the 'OPEN' position of the Roldeck®.  
The running direction of the Roldeck® is indicated by the arrow ←.  
The 'X' indicates that the engine is not recognized.  
By pressing the arrow key ←, the motor will be detected.



The 'OPEN' position is programmed by pressing the arrow key ←. Press the arrow key ← until the Roldeck® fully opened.  
The arrow above the position 'open' position flashes.  
The type of drive motor is automatically recognized. This is shown with the ✓ symbol.

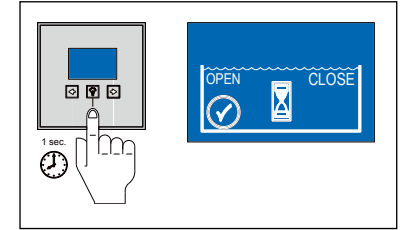


Press the middle key 'light symbol' once to save the 'OPEN' position. The hourglass ⌚ shows a short waiting time.

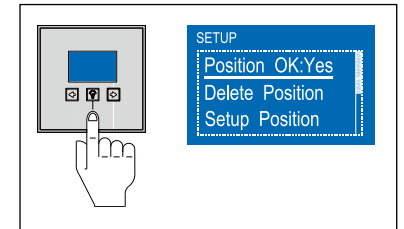


Subsequently, the 'CLOSE' position should be programmed. The display will ask you automatically.  
Press and hold the arrow key → until the Roldeck® is completely closed.

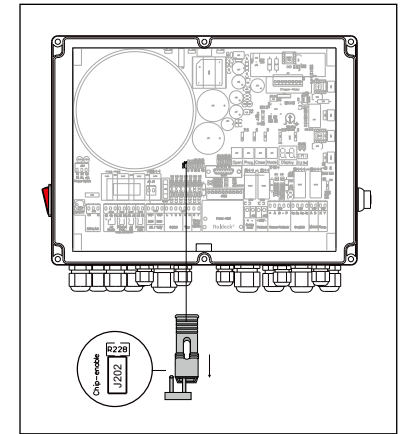
Press the middle key 'light symbol' again once to save the 'CLOSE' position. The hourglass ⌚ shows again a short waiting time.



When the Roldeck® is programmed, the display changes to the programming menu.  
Position OK: 'Yes' indicates that the programming was successful.

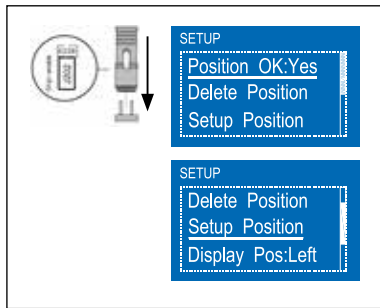


**⚠** If the programming is correct, use the arrow buttons ← or → to select 'Exit' to complete the programming. Then press the middle key „light symbol' briefly to close the program.  
The programming is complete. Put the jumper on 1 pin to prevent somebody of changing the programming.

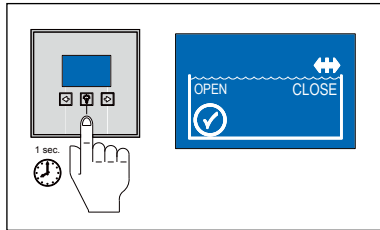


## 5.2 Change the position of the Roldeck® (afterwards) with the sSwitch

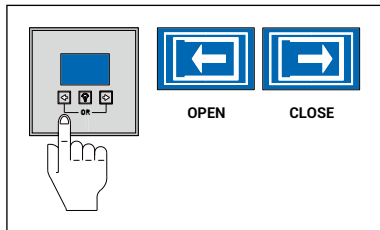
Place the jumper on the 2 connector connection. Press the right arrow to go to the menu 'Setup Position' and confirm the menu by pressing the lamp symbol. Now the fine tuning can be performed.



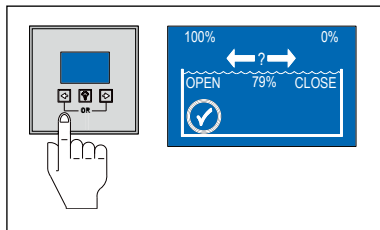
By pressing the middle key 'light symbol' shortly the fine tuning is called (←|→ flashes). The Roldeck® is in the 'CLOSE' position, this indicates that fine tuning is possible for the position 'close'.



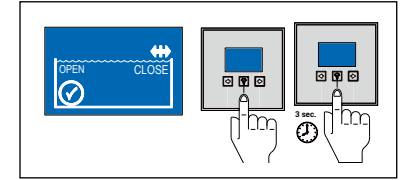
The Roldeck® is brought to the correct position with the arrows ← 'OPEN' or → 'CLOSE'.



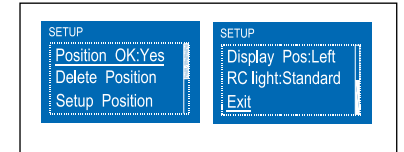
The fine tuning of the Roldeck® is shown as a percentage.



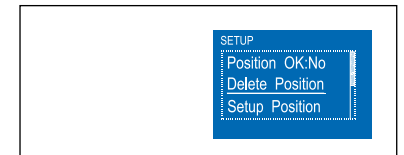
The position of the Roldeck® is saved with the 'light symbol' key. If the programming is correct, push 3 sec on the 'light symbol' to jump to the main menu.



Use the arrow buttons ← or → to select the 'Exit' symbol to complete the programming. Then shortly press the middle key 'light symbol' to exit the program and put the jumper back on one pin.

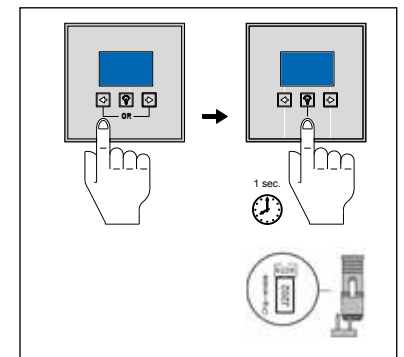


'Position Ok: NO' shows there was made an incorrect programming. This is possible when only one or no position is programmed or open and close programming are switched. In case of an incorrect programming, all the programming must be removed first. Use the arrow keys ← or → (Delete Position) and then press the lamp symbol. The program is deleted. Start again with programming the Roldeck®.

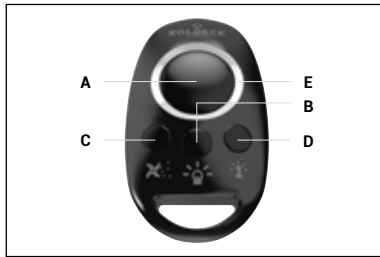


When the Roldeck® is programmed, the display changes to the programming menu. Position OK: 'Yes' indicates that the programming was successful.

**⚠** If the programming is correct, use the arrow buttons ← or → to select 'Exit' to complete the programming. Then press the middle key 'light symbol' briefly to close the program. The programming is complete. Put the jumper on 1 pin to prevent somebody of changing the programming.



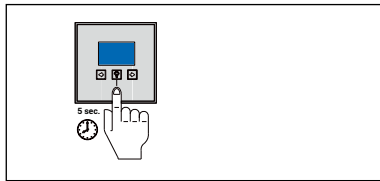
### 5.3 Programming Remote Control



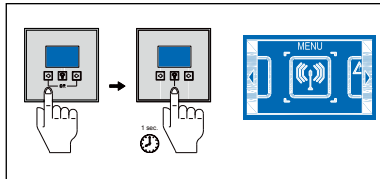
The remote control transmitter is pre-programmed.

If the transmitter is replaced, or if the number of transmitters is expanded, follow the procedure below.

**⚠** Make sure that the transmitter and the receiver will not be more than 5 meter distance from each other during programming.



Please keep the middle key „symbol the lamp‘ in for 5 seconds. This will bring you in the general menu.



With the arrow keys ◀ or ▶ of the sSwitch all other menu items can be selected. Select the symbol 'Antenna' and confirm this by pressing the 'lamp symbol'. The symbol 'Antenna & Remote Control' is now active.



To program the transmitter keep one of the four buttons pressed on the remote control. When the transmitter is recognized, the menu 'Program channel' closes immediately.

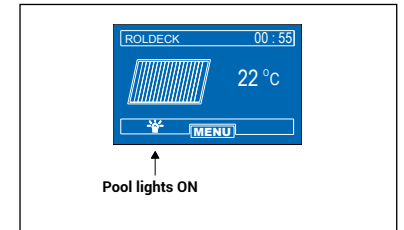
Transmitter / receiver have been programmed.

Up to 8 transmitters can be programmed. In the right bottom of the display the number of programmed transmitters is shown.

### Functions Remote Control

#### Pool lights 🏊

With the button 🏊 the pool lights can switched on or off. In case of RGB lighting, the light will be turned on or off with a delay of 3 seconds. When the pool lights are on, and the Roldeck® is running, the pool lights will switch on again. The light symbol in the display lights up.

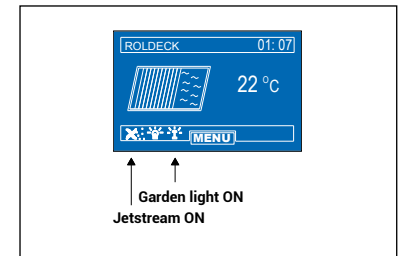


#### RGB lights 🌈

Press button 🌈 to switch on the pool lights, then press button 🏊 to switch between the color. Release the button when the desired color mode is reached.

#### Jetstream 🌊 and garden lighting 🌿

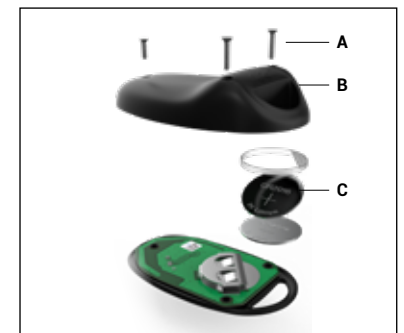
These functions can only be switched and off with the remote control. By pressing the button on the remote control the function will be switched on. By pressing the button on the remote control again the function is switched off.



#### Battery replacement

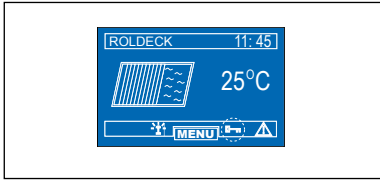
Remove the 3 screws (A) from the bottom of the housing. Remove the bottom plate (B). Replace the battery with the same item (CR2016 3V). Watch the polarity.

Frequency: 433.92 MHz.



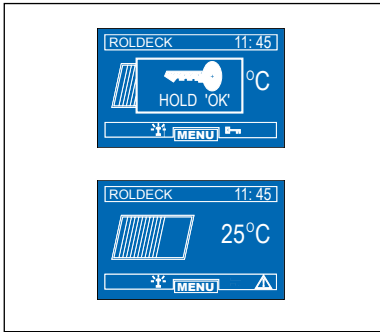
## 5.4 Child lock

The display shows the keylock active.



When pressing 1x at any key, the 'KEY LOCK HOLD OK' overlay screen will appear automatically after 15 minutes (timeout).

If the display shows 'KEY LOCK HOLD OK' press the OK button for 3 seconds, to unlock.



## 5.5 AutoLock function

By pressing the middle key 'light symbol' for 3 seconds the menu of the sSwitch opens.

By touching the arrow keys ◀ or ▶ briefly you can scroll through the menu.

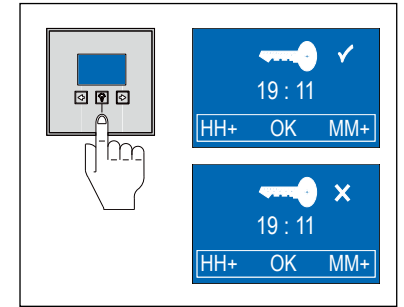
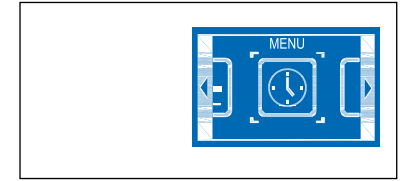
Select the symbol 'time' and confirm this with the 'light symbol'. It is now possible to switch on/off the AutoLock function.

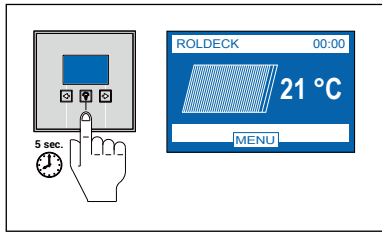
By touching 'light symbol' the AutoLock function can be switched on or off.

The time is set by using the arrow keys.

Symbol ◀ setting hours, Symbol ▶ setting minutes  
Then confirmed the time by pressing the key 'light symbol' for 3 seconds.

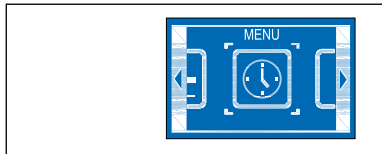
The menu returns to the symbol time.



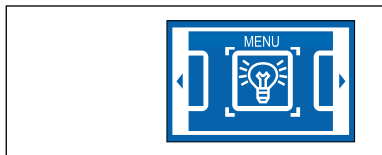


### 5.6 Lamps, that can be activated by the sSwitch

Please keep the middle key „symbol the lamp’ in for 5 seconds. This will bring you in the general menu.



Please press 3 times on the right arrow, the 'close' button → Then you will see the icon of the light.



Please press the 'symbol of the light'. So you will enter the menu where you can control the lamps.



By means of the arrow keys/buttons ← or → you can choose whether you prefer standard lamps or RGB lamps. The following screen appears for the standard lamps:



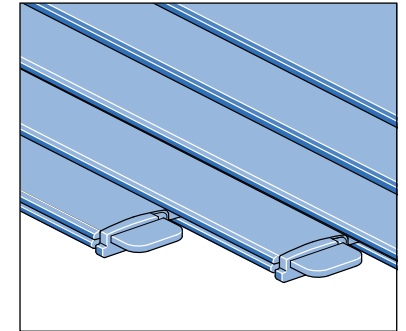
For the RGB lamps following window will pop up: Then confirm by pressing the symbol of the lamp.

## 6 Cleaning and Maintenance

### 6.1 Slats

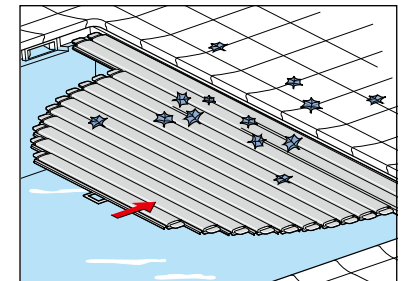
Clean the slats cover at least twice a year with a high-pressure cleaner and stiff brush. Avoid the use of sharp tools or materials on the cover.

- ⚠ The water circulation system (filter system) must run during daytime when solar or transparent slats are being used. Because with these types of slats heat will concentrate underneath the cover which will cause the slats to wear more quickly or even cause deforming of the slats.
- ⚠ Use a high pressure cleaner carefully (max. 60°, and minimum distance from the lance is 500 mm).
- ⚠ The slats may not be exposed to sunshine for any length of time when they are not in contact with the water (see chapter 1.4, page 6).
- ⚠ Remove scale and algae deposits annually.



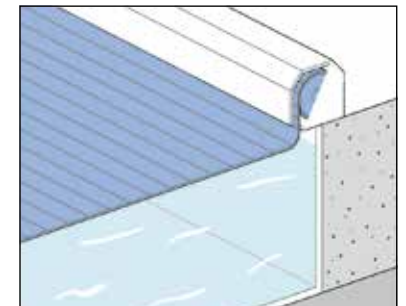
### 6.2 Debris

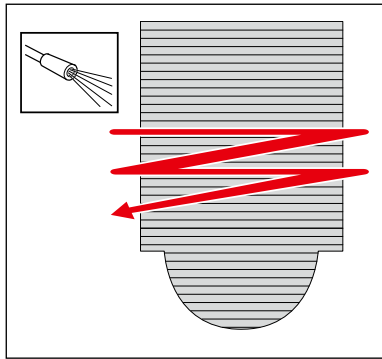
Remove leaves and other debris before closing. This will prevent the cover pit from getting too dirty.



### 6.3 Housing

Clean the housing with a high pressure cleaner and a soft brush or sponge.





## 6.4 Descaling

Slat scale can develop itself on the top side of the slats. You can remove this with Roldeck® ontkalker.

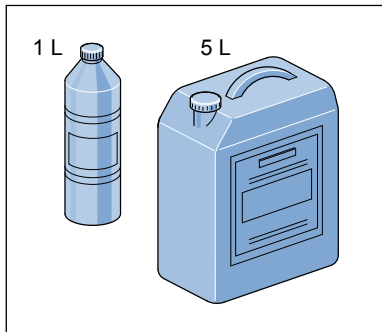
- Moisten the cover slats by spraying the descaler across the cover with a sprayer (1 liter per 10 m<sup>2</sup>).
- Let the descaler act on the surface for about 1 or 2 hours.
- Spray the Roldeck® in bands from left to right in order to spray all calcium out of the cavities. Brush the slats first with a scrubber if necessary.
- Vacuum the swimming pool to remove debris that has formed due to the cleaning.
- After this, backwash the filter.
- Recover the water pH value by adding Starline pH+.

The decalcifier will disappear from the water in a day.

 Handle the pressure washer with care

### Important

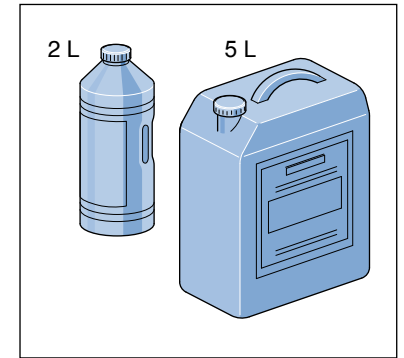
- First read the instructions on the packing before using.
- Keep descaler out of the reach of children.
- Keep descaler away from food, drink and animal feeding stuffs.
- Avoid contact of descaler with the skin.
- Avoid contact of descaler with the eyes. In case of eye contact, immediately rinse with plenty of water and get expert medical advice.
- Make sure when using a sprayer that the swimming pool terrace will not be corroded by descaler.
- After descaler use, wait at least two hours before putting the swimming pool into use again.
- If descaler is used repeatedly, use an intermediate period of about 1 or 2 days on account of water economy.
- Dispose of both the material and the packing as chemical waste.



## 6.5 Cleaning

Remove and prevent biological growth (such as algae) on and between your slats with Roldeck® Cleaner.

- Use this product from 10°C water and outside temperature.
- Make sure that the hinges of the closed Roldeck® are visible before applying the product. This allows the product to penetrate into the hinges.
- Mist the slats with the Roldeck® Cleaner with a mist syringe (dilute 5%).
- Leave the product to work for 30 to 60 minutes and then open the Roldeck® so that the slats are all rolled up under water.
- After 30 minutes, close the pool cover.

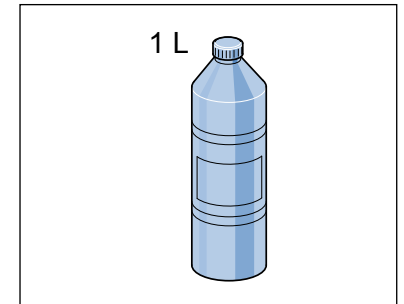


## 6.6 Crystal Clear

With the Crystal Clear you can remove fine particles that are not visible to the naked eye and that can not be absorbed by the filter installation. The product ensures that these dirt particles adhere to each other and form a larger whole, so that the dirt can be removed through the filter. The result: clear swimming pool water! The product contains a high concentration so that it lasts longer.

### Instructions:


- Add 16 ml per 10 m<sup>3</sup> of water undiluted in the water to be treated.
- Repeat this after every back wash.



## 6.7 Chlorine shock

Never administer a chlorine shock when the Roldeck® is closed. This causes damage to the slats. After a chlorine shock, the cover should remain open for 24 hours while the filtration remains on.

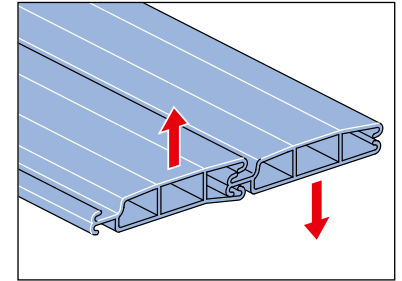
If salt electrolysis is used, the position of the cover must be transmitted (via the control) to the electrolyser in order to stop or greatly reduce the release of chlorine when the cover is closed. Otherwise, too high a chlorine level may occur in the water. Any damage caused by over-chlorination is not covered by the warranty.

 pH value of the water: between 7.0 and 7.4.  
Maximum chlorine content: 2mg/l

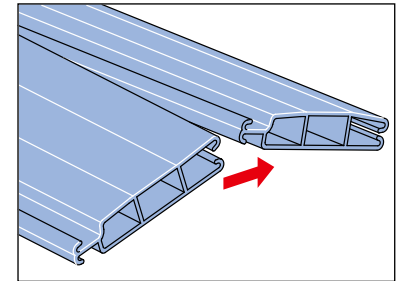
## 7 Slats

### 7.1 Disassemble the slats

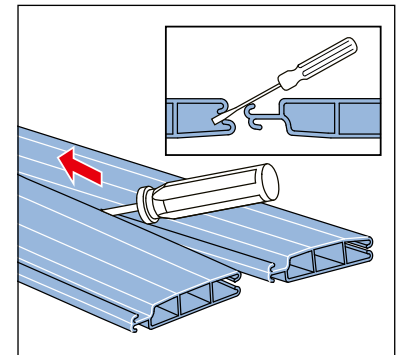
Upward the left slat in relation to the right slat (this can be reversed), the upper hook latch of the right slat can come out of the lock. Next, the lower hook latch can be taken out of the lock.




The slats can now be divided across a length of about 10 cm.

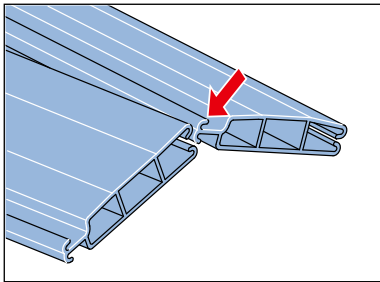
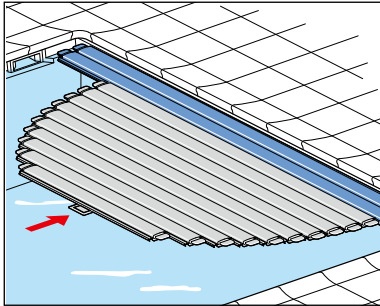


Use a screwdriver to divide the slats across the entire length.

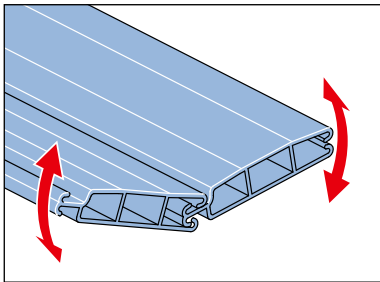


## 7.2 Assembling slats

 Slide the Roldeck® towards the edge as close as possible. This will simplify replacement of the slats.



Bring the slats together. Latch the hook latches together, starting with the lower hook latch of the right slats (this can be reversed).

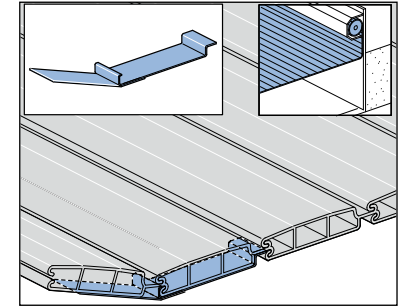


Try to make the connection across the length of the slats by moving up and down.

## 7.3 Clips and Brackets

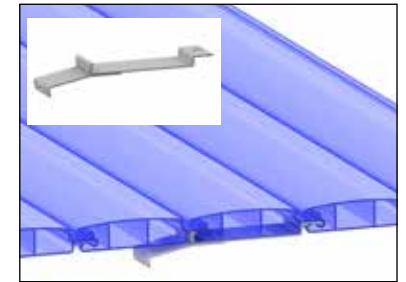
### Non-slip guiding bracket

The purpose of the directional guide handle is to have the slats, when these go into the water based on an assembly instruction, go in the right direction. The first slats will be under an angle in relation to the second slats due to the clip, so that a bow will be formed like with a boat.



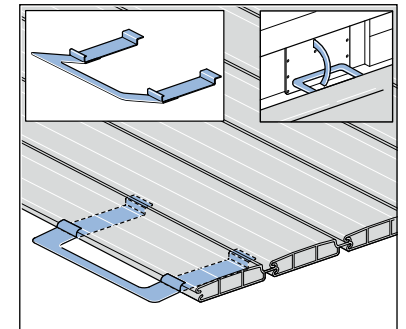
### Non-slip Clip

The non-slip clip is intended to prevent sliding of the slats into the recess in case of a Roldeck® with extremely shaped walk-in stairs. If the end customer finds it, he should warn the installer to reposition the clips. It is very hard for the end customer to determine the correct position.

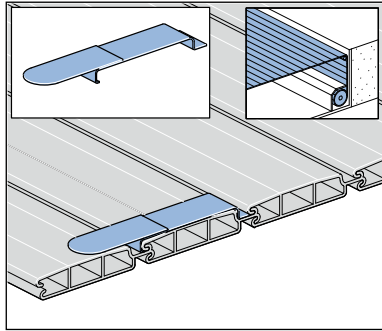


### Child Safety Handle

The child safety handle has been mounted onto the first slats and it serves as locking hole for the child safety lock's hook latch, in order that the Roldeck® cannot be pushed open.

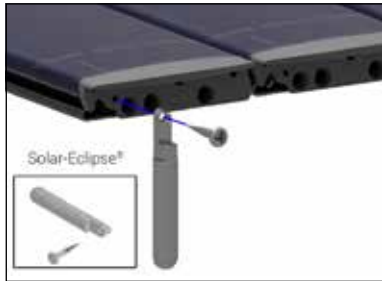






#### Roldeck® guiding bracket (below-ground system)

The function of the directional guide handle fitting is to guide the slats that come upward out of the water into the correct direction. As the clip was mounted onto the second slats, the rounded part will ensure that the first slats can only pivot one way.



#### 7.4 Overflow guide

##### Overflow guide edit

The overflow guide serves to keep the slats within the bath when a bath has an overflow. Due to the overflow guide, the slats are pressed against the pool edge below the water level, so that they do not flow with the sideways flow.



##### Overflow Locking Pin edit

The Overflow Blocking Pin serves to keep the slats inside the bath, if there is talk of an overflow at the end of the bath. The pin will touch the pool rim below the water level and hold the slats in place with the downdraft created by the overflow.

## 8 Failures

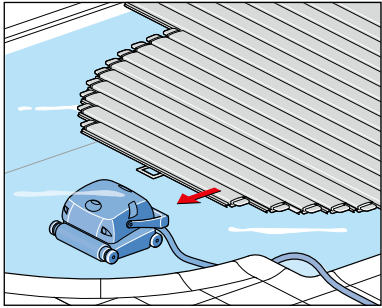
### 8.1 Overview failure Messages RDEB2013

Consult the failure table below in cause of a display error. Contact the installer if necessary.

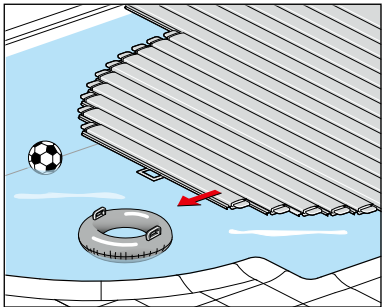
Display Error	Description
F01	No sensor signal by start motor
F02	No sensor signal during running for $\leq 1$ second
F03	Wrong direction of rotation (50 pulses in the wrong direction)
F04	Short-circuit (motor current $> 30A$ )
F05	Too much current (motor current for 10 s $> 9.5 A$ )
F06	Runtime error (Roldeck® $> 900s$ , bottom lid $> 120s$ )
F07	Overvoltage (motor voltage for 5s $> 45V$ )
F09	Overtemperature chopper module (temp $> 100^\circ C$ )
F10	Sensor short circuit (sensor inputs A & B)
F11	Sensor error (both sensors are different)
F12	Absolute overvoltage (motor voltage $> 60V$ )
F21	Water Level Sensor Input Open (RD Model: SK)
F22	Key switch off '0'
F31	Overpressure Roldeck® driver, pressure drop in in-roller motor Roldeck®
F32	Overpressure lid driver, pressure drop in in-roller motor of moveable bottom flap

For error F04, F11 and F12: switch control off

## 8.2 Failure Prevention

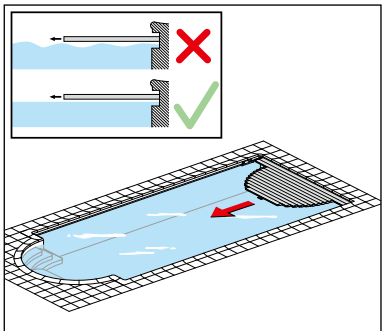


- ⚠ Make sure the bottom vacuum hose or cable will not be pulled along when moving the Roldeck



### Obstacles

Before opening and closing the Roldeck®, remove all objects from the water and from the Roldeck® itself. Also remove any objects from the niche before operating the Roldeck®.



### Wave Action

Don't close until water wave action has disappeared and the water is behaving calmly. Wait a minimum of 30 seconds.

- ⚠ The jet stream must be switched off when opening and closing the Roldeck®.

### Hail

In the event of hail, you must open the Roldeck® to prevent damage.

## 8.3 Water Level Control

### Level Control

If the water level is too high or too low, the slats may deform while opening and closing the Roldeck. Avoid too high or too low a water level using the Starline level controller. This is for an optimal water level in the swimming pool.

The water level should also be checked regularly in the case of an automatic control.

- ⚠ Keep the water level at the correct level, in order that the Roldeck® doesn't experience any hindrance from edge stones, the safety edge or gripping bars.

You should stop the cover immediately if there are any irregularities.

### Overflow

The overflow in the skimmer makes sure excess water will immediately drain into the waste pipe.

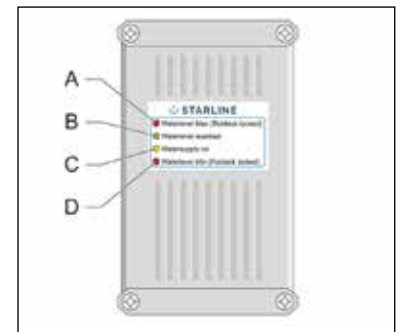
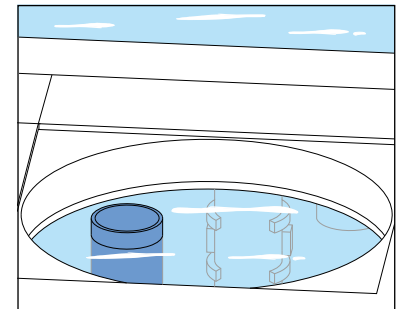
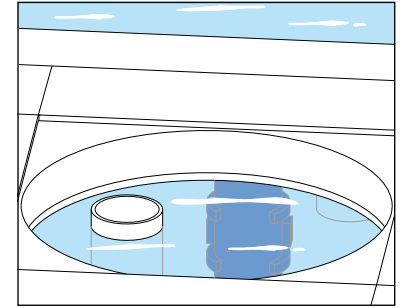
The correct water level will be set by the installer.

### Level Control

The level control is fitted with 4 LED indicators:

- A Max. water level (Roldeck® cannot open or close)
- B Water level correct
- C Water supply enabled
- D Min. water level (refer to A)

- If all LED's light, the level control has run for 12 hours continuously.
- If LED A+D light, there is a miscommunication between the sensor and the level control. Consult your installer in that case.

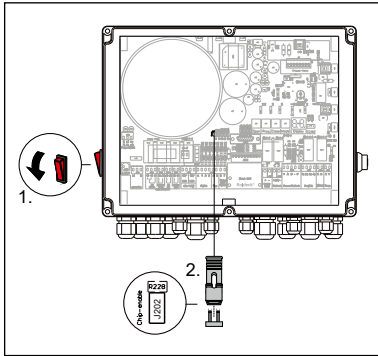


## 8.4 Manual Roldeck® Operation

If the Roldeck® motor fails due to a malfunction with one of the sensors (error code is readable in LED display or s switch).

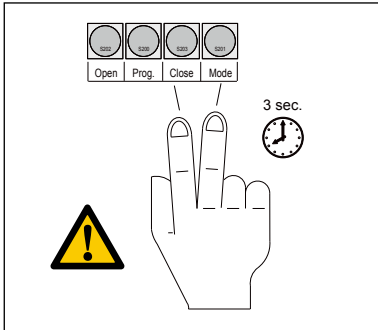
The function of the sensor can be switched off by means of a button combination together with the jumper.

First turn on the control by means of the red button (1) and connect the jumper of the RD2013 into socket (2).



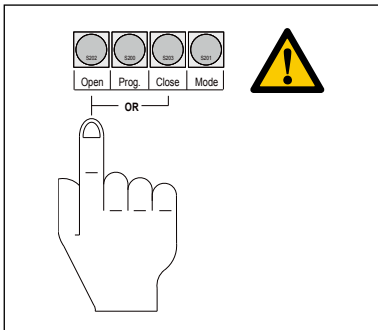
Then push the buttons 'mode' and 'close' simultaneously for 3 seconds in a row.

The manual control function is only meant in case of need, by using this control the pre-programmed OPEN and CLOSE position will be erased from the memory of the control unit. After the problems are solved the OPEN and CLOSE position must be programmed again.



Subsequently the Roldeck® can be controlled manually by pushing the 'open' and 'close' button in the control box until the desired position is reached.

When the button is released, the Roldeck® stops automatically. Pay attention when opening or closing the Roldeck® that the Roldeck® doesn't move too far.



## 9 Technical Specifications

Slats material	Hard PVC / PC	
Slats weight	4,8 kg/m <sup>2</sup> - 5 kg/m <sup>2</sup>	
Available colors	White Blue Gray Cream Translucent (especially suitable for internal swimming pools) Solar (especially for external swimming pools)	
Control	RDEB2013 Microprocessor-controlled (EEPROM) 230 V / 24 V	
Drive mechanism	24 V separate driving motor / In-roller motor	
Insulation value	4 - 6 W/m <sup>2</sup> K (depends on wind speed/direction)	
Energy saving	Internal pool	up to 70 %
	External pool	60 - 80 %

### 9.1 External Motor / In-roller motor

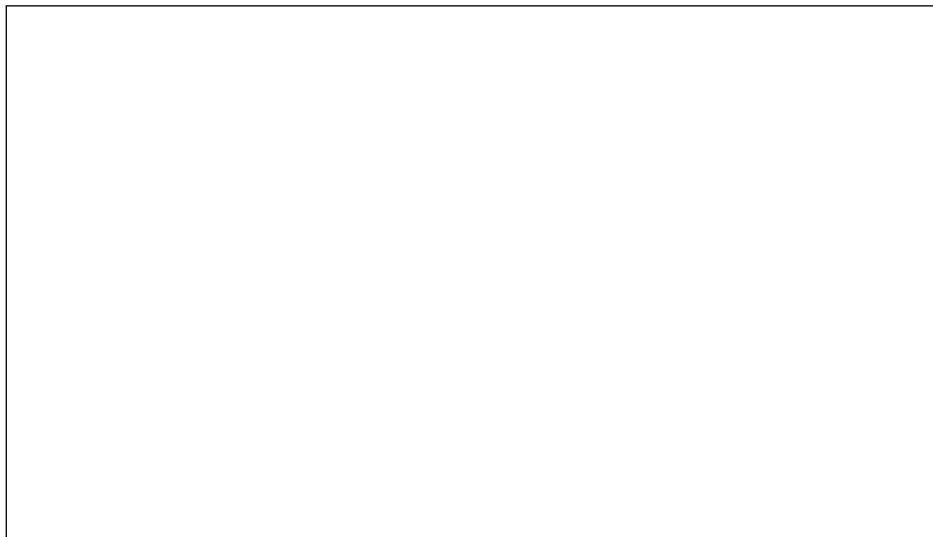
<b>Model</b>	
<b>Construction year</b>	
<b>Serial number</b>	

### 9.2 RDEB2013

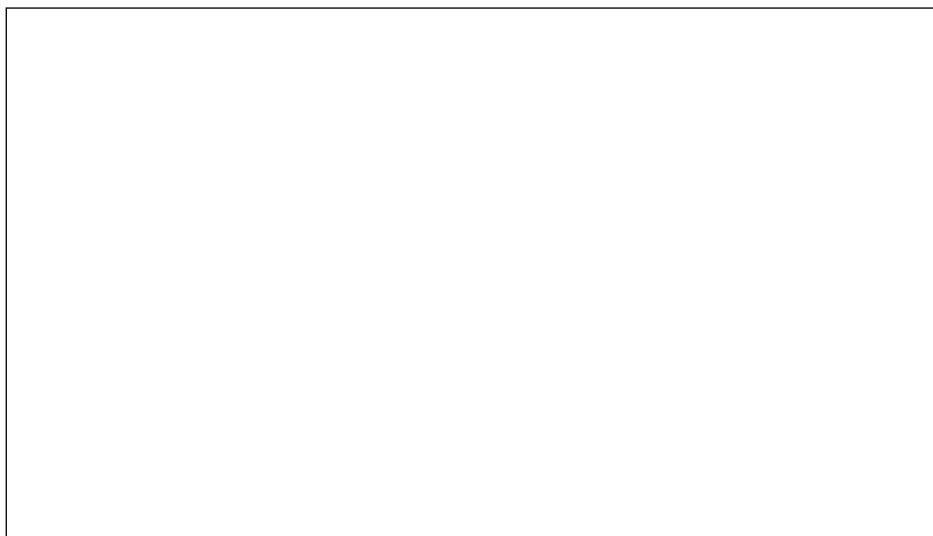
<b>Model</b>	
<b>Construction year</b>	
<b>Serial number</b>	

## 10 Supplement/Nachtrag/Supplement/Suplemento/Supplement

Sticker/Kleber/Sticker/Etiqueta/Autocollant



Installer Stamp/Installateursaufdruck/Installateur stempel/ Instalador de sello





2022 versie1

**Roldeck®**

Siberiëstraat 20, 3900 Pelt, België

+32 (0)11 64 78 00

[sales@roldeck.com](mailto:sales@roldeck.com)

[www.roldeck.com](http://www.roldeck.com)

**ROLDECK**  
POOL COVER SYSTEMS