

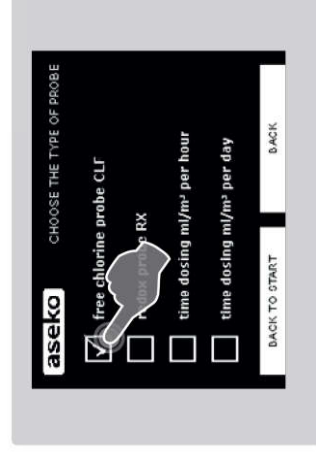
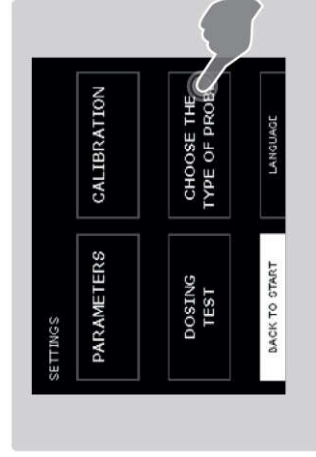
Choose the function of Your ASIN Aqua

- 1) Free chlorine probe CLF
- 2) Redox probe RX
- 3) Time dosing ml/m³ per hour or per day

- From the home screen select settings



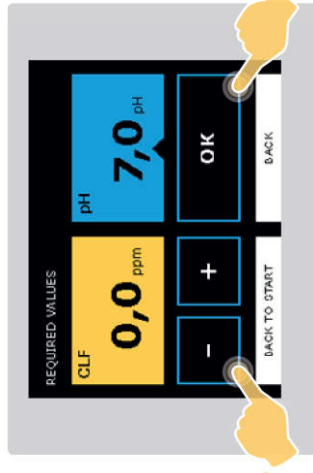
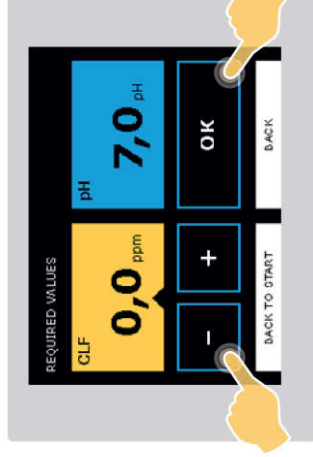
- then CHOOSE THE TYPE OF PROBE to reach the following screen.



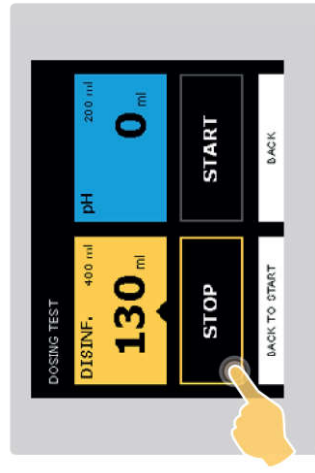
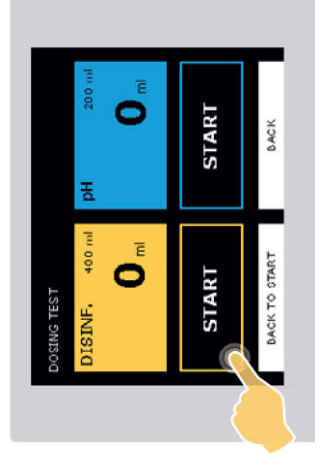
1) If You have free chlorine probe

Your Asin Aqua is already installed, connected to pool water and to chemical agents.

- Set up the chlorine level to 0,0 mg/l
- Set up the pH value to 7,0



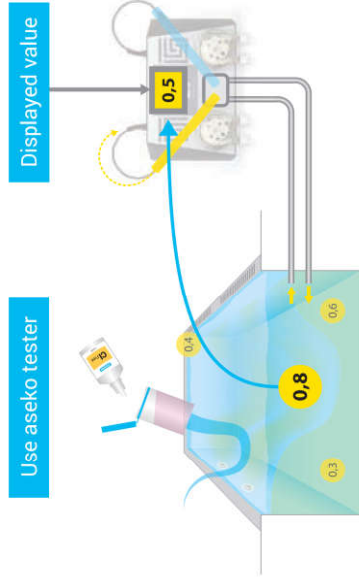
- Manually adjust the chlorine level in your pool to 0,5 – 1,2 mg/l by using manually dosing from ASIN Aqua or hand dosing of Superchlorination agent directly to pool.



Wait 24 hours for the probe stabilization.

The first CLF calibration

- Using the Aseko test kit provided, manually check the chlorine level of your pool by taking a sample from the output stream of pool water.
- From the start screen of your ASIN Aqua select SETTINGS and then CALIBRATION.



- Select the yellow chlorine box on the left of the screen. If the probe is broken or have any other malfunction the following notification is given.
- Compare the reading given on your ASIN Aqua with the reading taken manually. If different adjust the reading on the ASIN Aqua by pressing the + and – buttons so that they match and press OK to save

When your manual chlorine readings match the ASIN AQUA readings, your probe is accurately reading chlorine levels.

RECOMMENDATION:

Check your chlorine level in your pool once a week.

The table below gives the recommended levels of chlorine for your pool. This varies with the temperature of your pool and should never be less than 0.3mg/l.

Chlorine Level mg/l	Water Temperature
0.3 – 0.5	24 – 26 °C
0.5 – 0.8	26 – 32 °C
0.8 - 1	Over 32 °C

