

SWIMMING POOL INSULATION

To satisfy 2010 edition of Part L of the Building Regulations Certikin has added *Cellecta's* XPOOL® very high compressive strength, closed cell, 100% recyclable extruded polystyrene (XPS) insulation boards to its range.

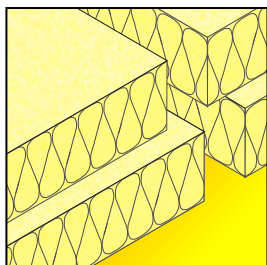
XPOOL® boards have excellent life-long thermal performance and very low water absorption, allowing them to be installed below the concrete slab or behind retaining walls without the need for a damp proof membrane (DPM).

For projects that require insulation products to have a global warming potential (GWP) of less than 5, we can offer CO₂ blown XPOOL® **eco** which is Code for Sustainable Homes Pol 1 compliant.



Key features:

- Very high compressive strength able to withstand long-term static loads
- Excellent life long thermal performance
- Reduces heating bills and keeps the pool warmer for longer
- Very low water absorption (<0.7% after 28 days)
- Environmentally friendly - 100% recyclable
- Code for Sustainable Homes compliant



Shiplap edge on all four edges

Technical specifications

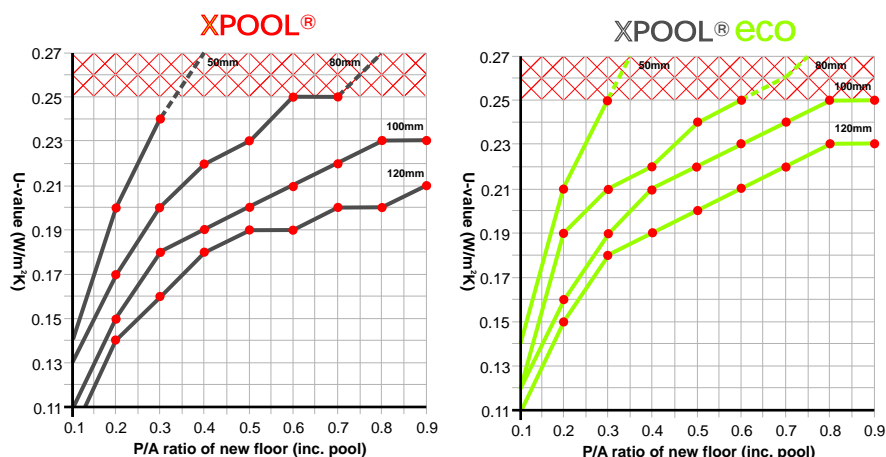
| Properties | Standard | Unit | XPOOL® | XPOOL® ^{eco} |
|---|--------------------------------|-------------------------------|---|--|
| Thermal conductivity | BS EN 12667: 2001 | W/mK (I _{90/90}) | ≤60 - 0.030 70 - 80 - 0.032 ≥90 - 0.033 | ≤75 - 0.034 80 - 120 - 0.036 140 - 0.038 |
| Compressive strength | BS EN 826 (10% Value) | kPa | 480 | 500 |
| | BS EN 826 (2% design value) | kPa | 180 | 180 |
| Long-term water absorption by immersion | BS EN 12087 | % Volume | <0.7% | <0.7% |
| Water vapour diffusion factor | BS EN 12086 | m | 100-200 | 100-200 |
| Code for sustainable compliant | Pol 1 | - | No | Yes |

Building Regulations

To comply with the 2010 Edition of Part L of the Building Regulations, where a swimming pool is constructed as part of the dwelling, the pool must achieve a U-value no worse than 0.25W/m²K when calculated in accordance with EN ISO 13370: 1998. Certikin offers a free U-value calculation service; simply call 01993 778855 with your specific construction details.

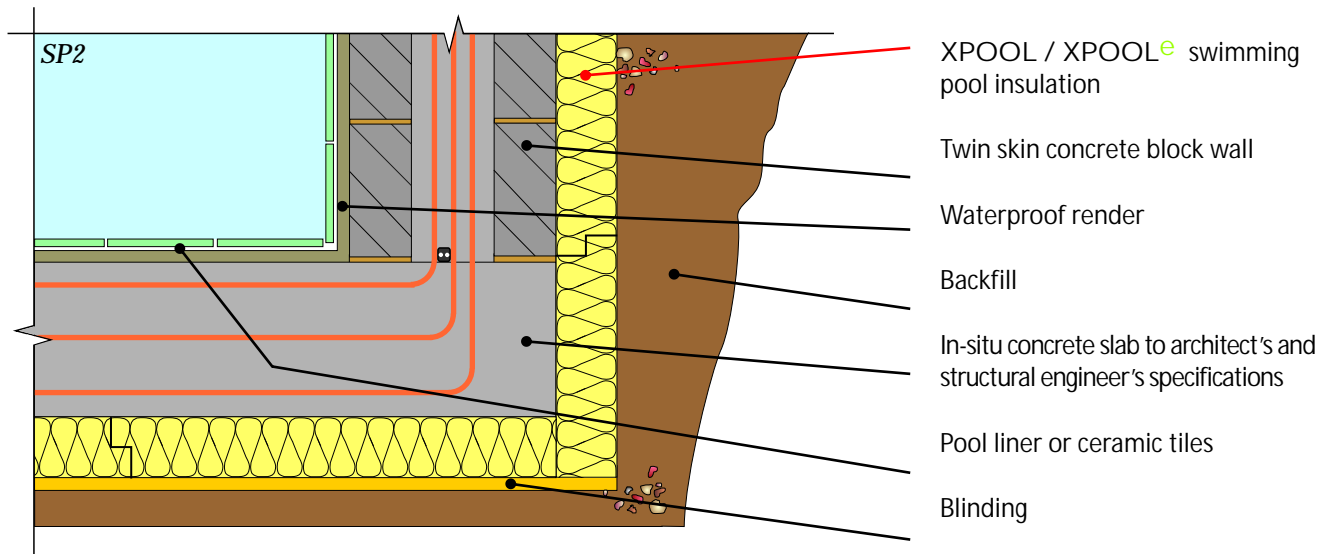
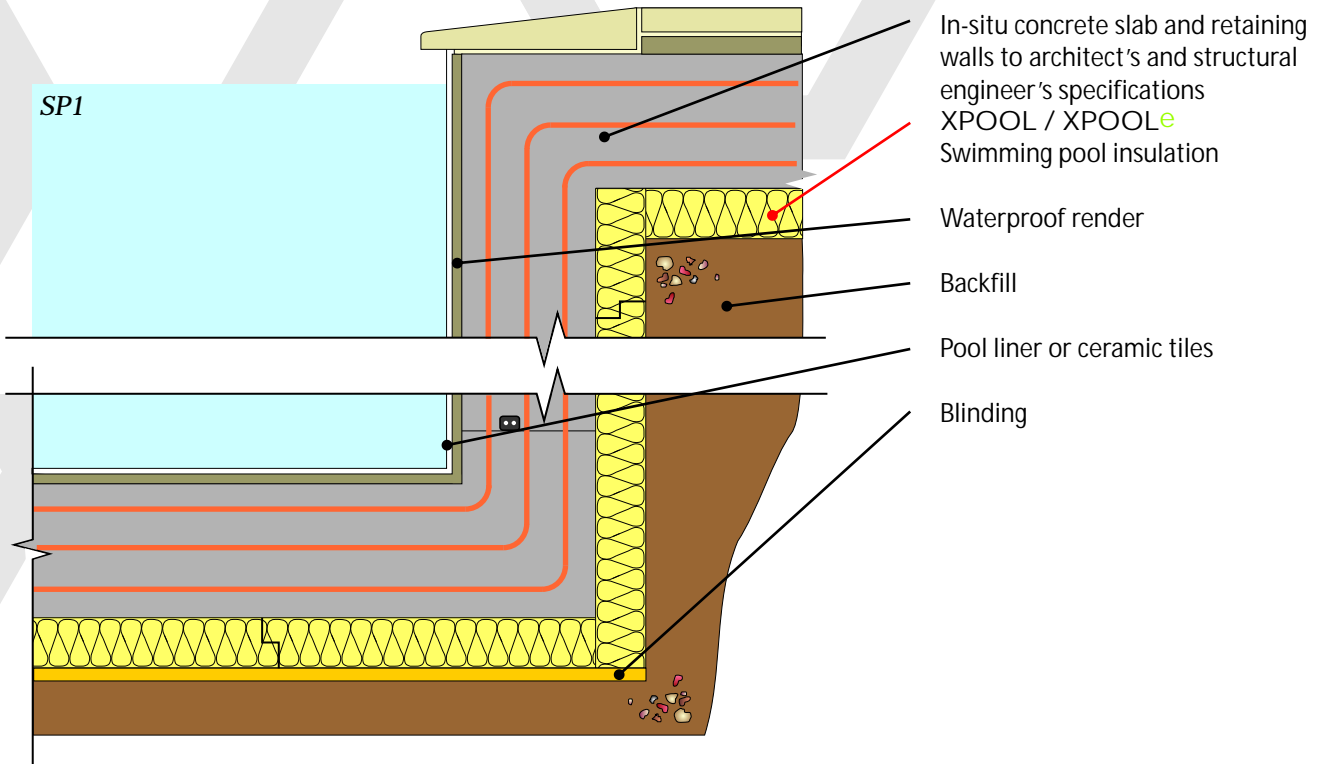


Typical thickness of insulation required

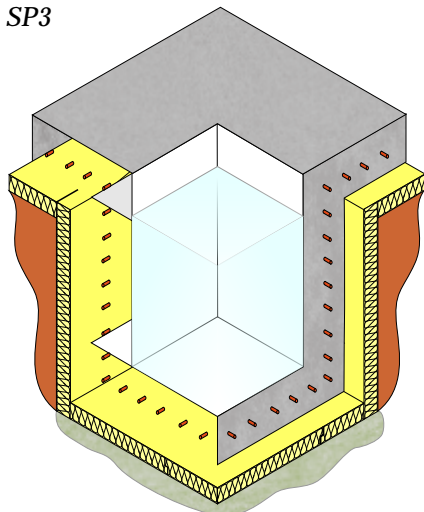


Note: P/A ratio = Exposed perimeter of the floor divided by the area of the floor.

Internal swimming pool: In-situ ground bearing concrete floor slab and walls
 Insulation installed below the concrete slab and behind retaining wall



SP3



Official Supplier



Certikin international Li,mited,
 Witan Park, Avenue 2,
 Station Road Industrial Estate,
 Witney,
 Oxfordshire
 OX28 4FJ
 Tel. 01993 778855
 Email. info@certikin.co.uk
 www.certikin.co.uk