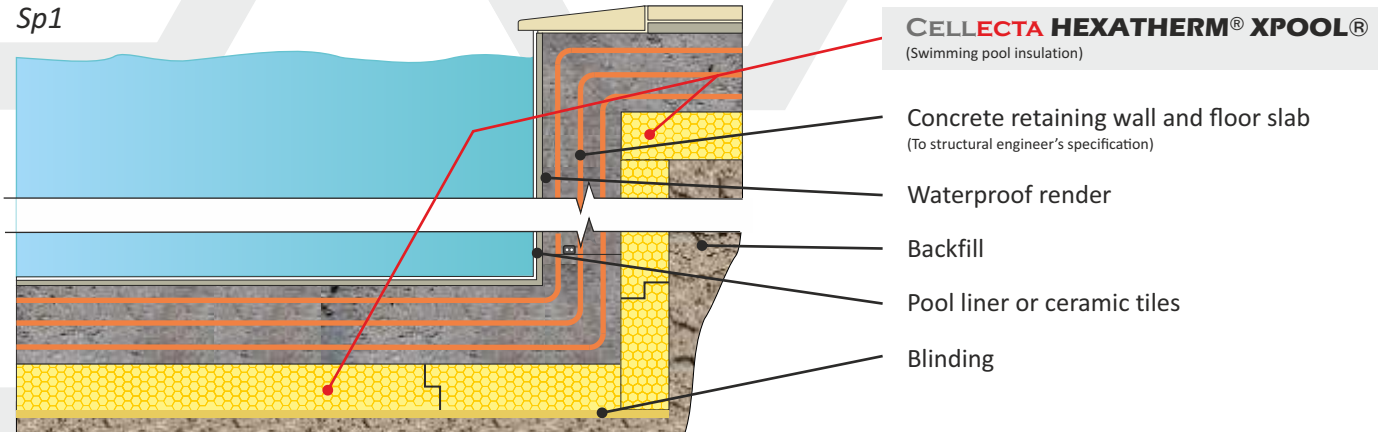


CELLECTA HEXATHERM® XPOOL® insulation installed below slab and external face of the retaining walls

Sp1



CELLECTA HEXATHERM® XPOOL®
(Swimming pool insulation)

Concrete retaining wall and floor slab
(To structural engineer's specification)

Waterproof render

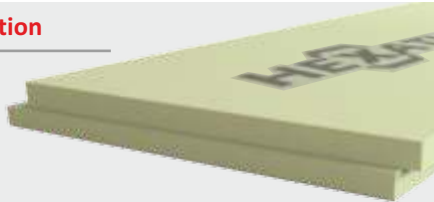
Backfill

Pool liner or ceramic tiles

Blinding



Product Information



Designed specifically for swimming pool applications **XPOOL** insulation boards have a ultra high resistance to compression, extremely low water absorption and outstanding thermal performance, providing long term energy savings.

Product Benefits

- ⬢ Extra high compressive strength
- ⬢ Excellent life-long thermal performance
- ⬢ Very low water absorption
- ⬢ Closed cell structure

Physical Properties

	XPOOL®
Thermal Conductivity EN 12667 (W/mK)	0.035
Strength at 10% compression EN 826 (kPa)	500
Strength at 2% compression EN 1606 (kPa)	180
Long term water absorption by immersion EN 12087	0.7%
Temperature range	-50/+75 °C
Board size (mm)	600 x 1250
Thickness* (mm) (other sizes manufactured to order)	50 60 75 80 100 120 140 160
Edge profile	Shiplap

Typical Thickness of Insulation Required

P/A ratio	HEXATHERM® XPOOL (mm)							
0.7	100	110	125	150	165	190	230	280
0.6	80	110	120	140	160	190	230	280
0.5	75	100	110	130	150	180	220	270
0.4	75	100	100	120	140	160	210	260
0.3	60	75	90	110	130	150	200	250
	0.25	0.22	0.20	0.18	0.16	0.14	0.12	0.10

U-value (W/m²K)
Calculated in accordance with ISO 13370

Third Party Accreditation and Approvals



Environmental Credentials



Code for Sustainable Homes

The following Code for Sustainable Homes credits are obtainable as a result of incorporating **HEXATHERM®** into the construction detailed.

Mat 1

Element N°	820100010
Green Guide rating	C
Code credits	0.5

Note: Mat 1 Code credits have an approximate weighted value of 0.3